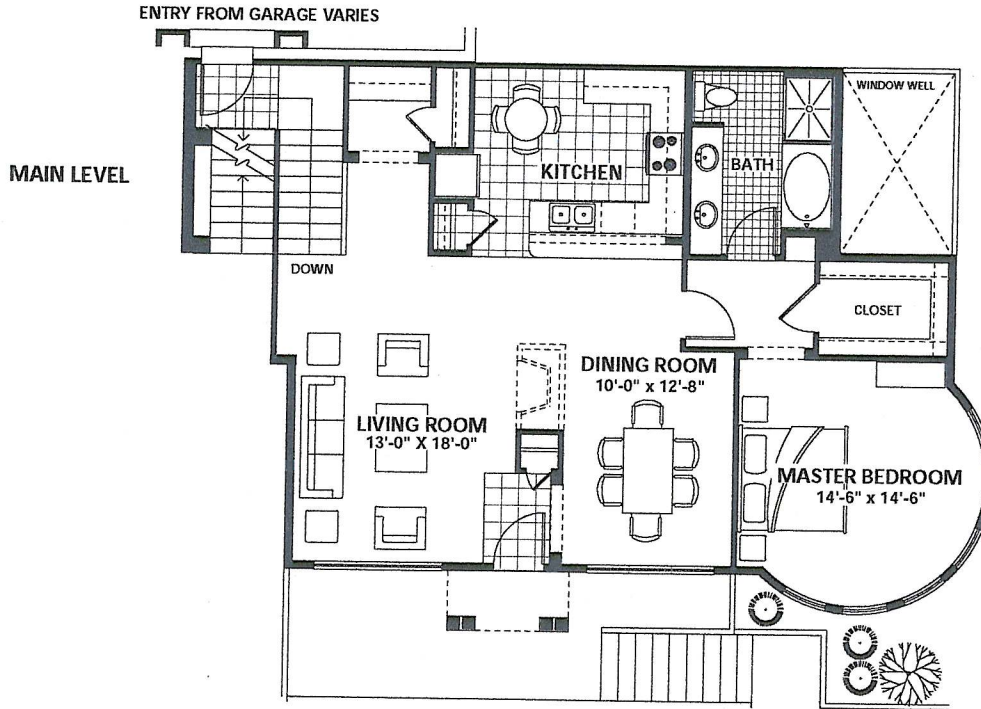


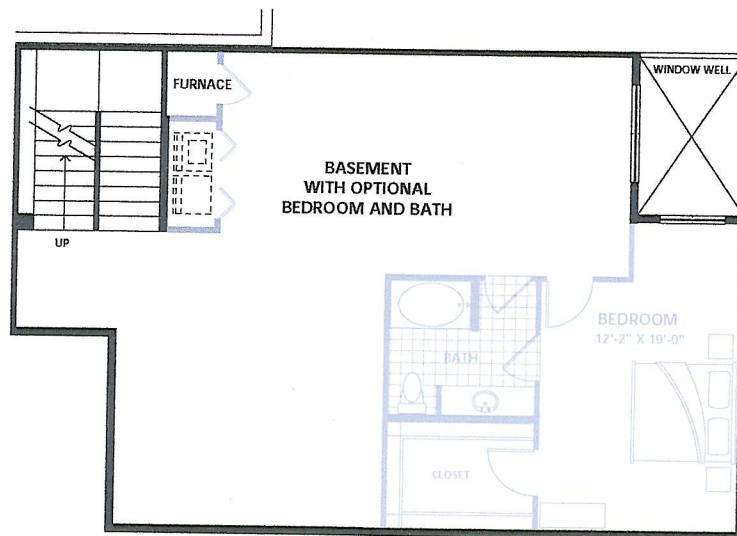
# ADAMS

## CITY HOME

MAIN LEVEL 1107 s.f.  
BASEMENT LEVEL 1089 s.f.  
TOTAL 2348 s.f.



### BASEMENT LEVEL



*Grant Park*  
612-359-0555

Sales and Marketing by  
CARLSON PARTNERS  
CONSULTING



The Developers of Grant Park's policy of continual improvement in design and contribution requires that specification, equipment, dimensions and prices be subject to change without notice. Refer to plans and specifications in the Sales Office for current details.